



TOYOTA

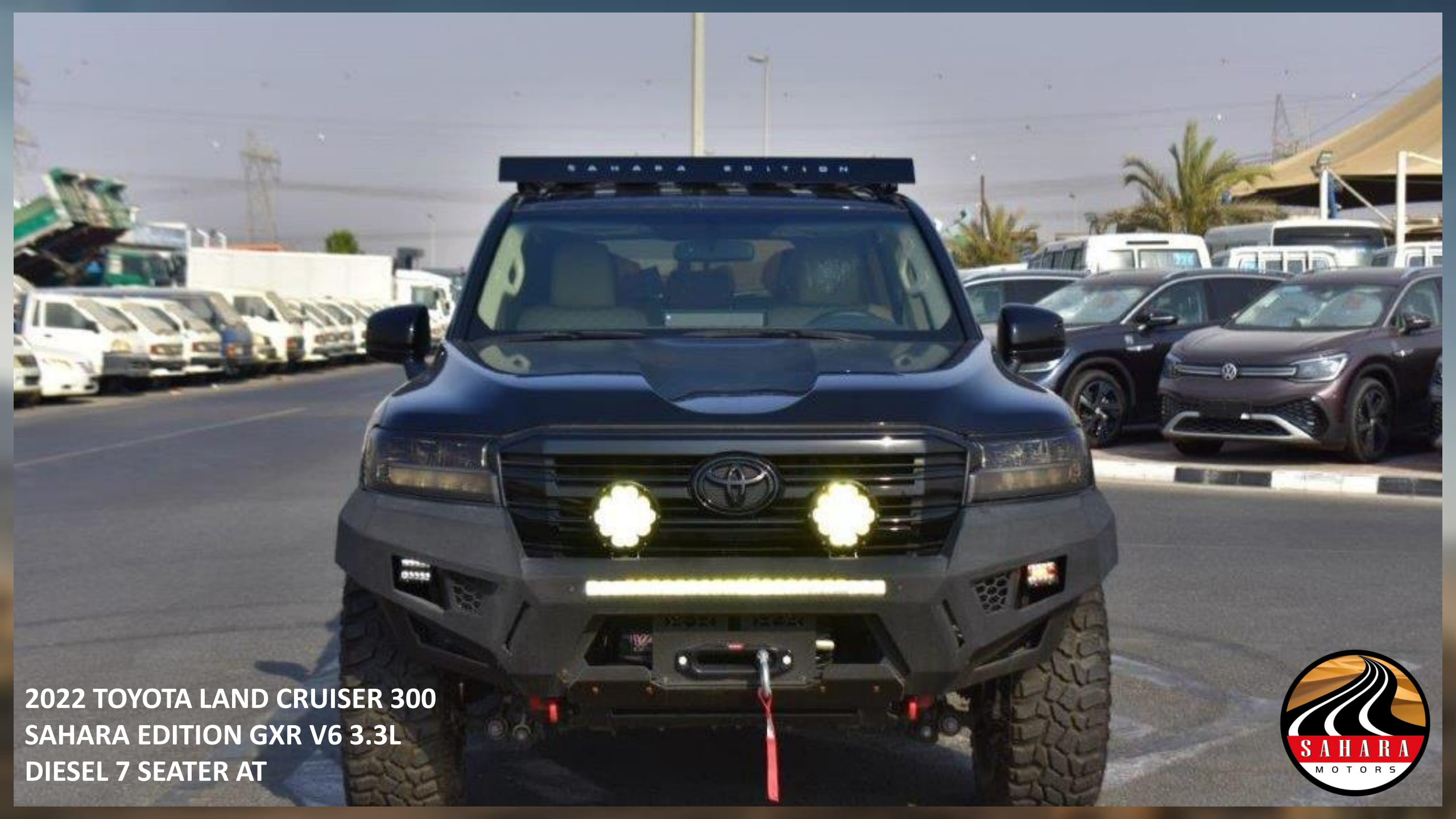


TOYOTA

2022  
**Land Cruiser**

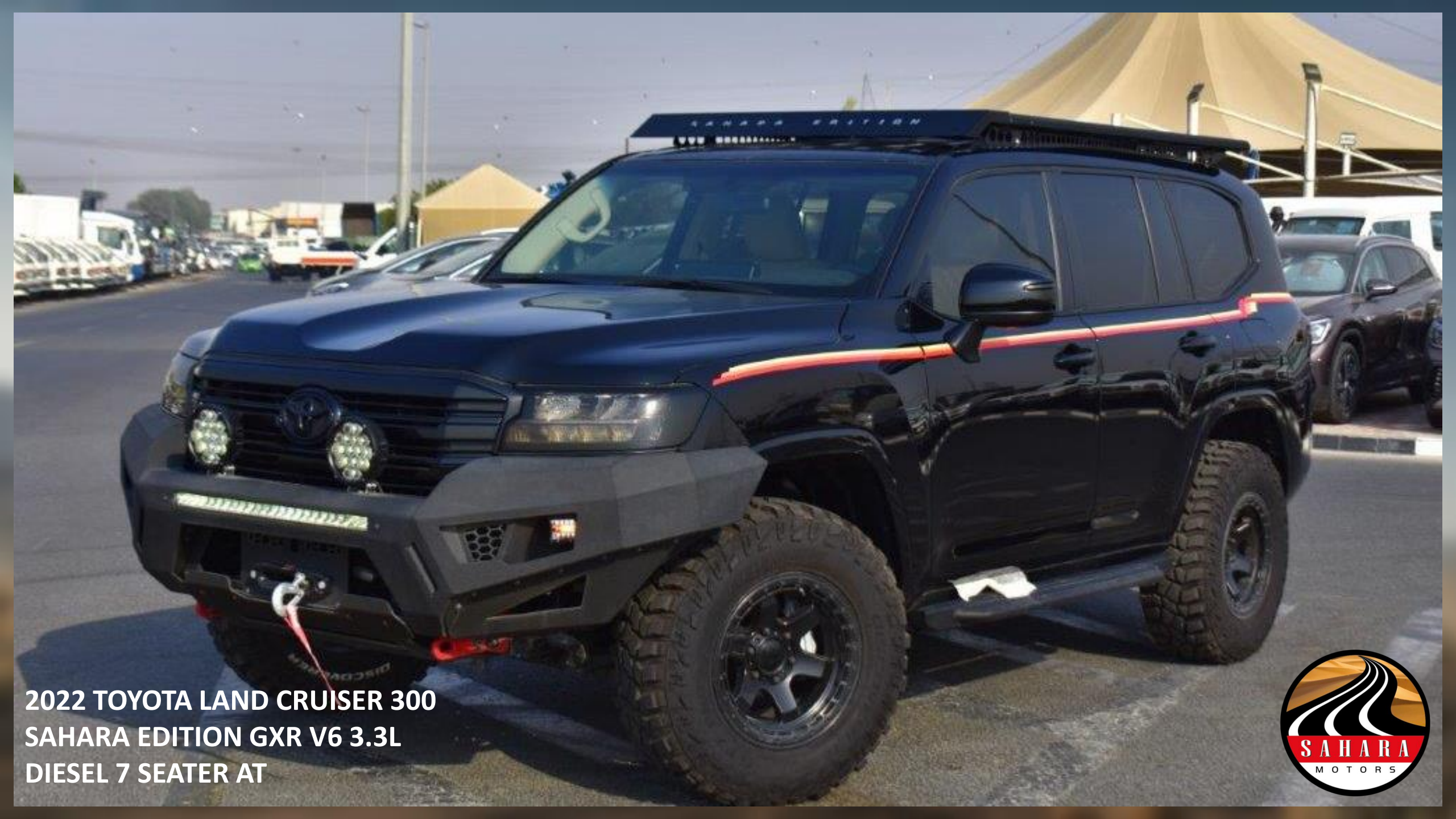
**SAHARA EDITION** GXR V6 3.3L D





**2022 TOYOTA LAND CRUISER 300  
SAHARA EDITION GXR V6 3.3L  
DIESEL 7 SEATER AT**





**2022 TOYOTA LAND CRUISER 300  
SAHARA EDITION GXR V6 3.3L  
DIESEL 7 SEATER AT**



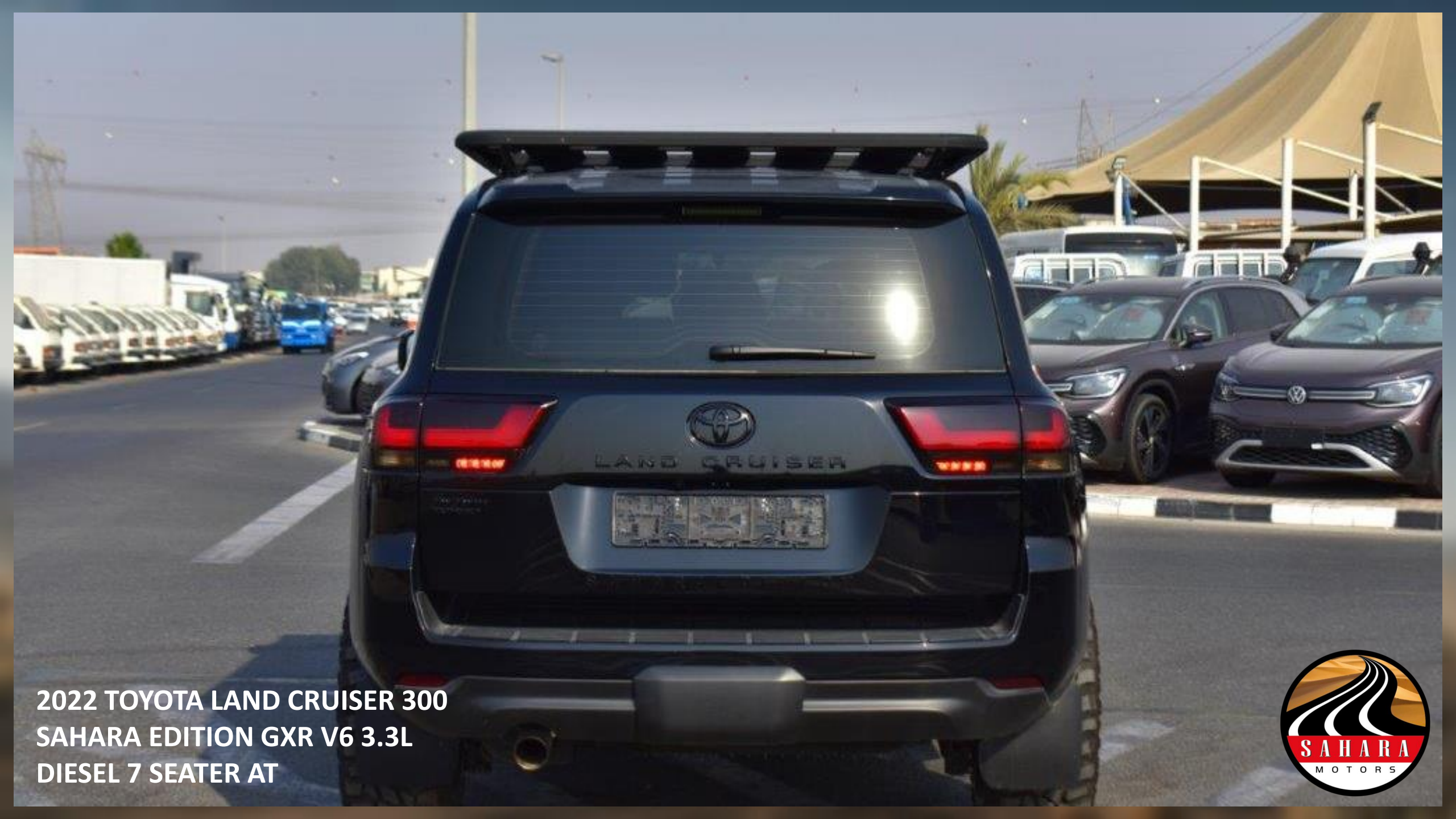
**2022 TOYOTA LAND CRUISER 300  
SAHARA EDITION GXR V6 3.3L  
DIESEL 7 SEATER AT**





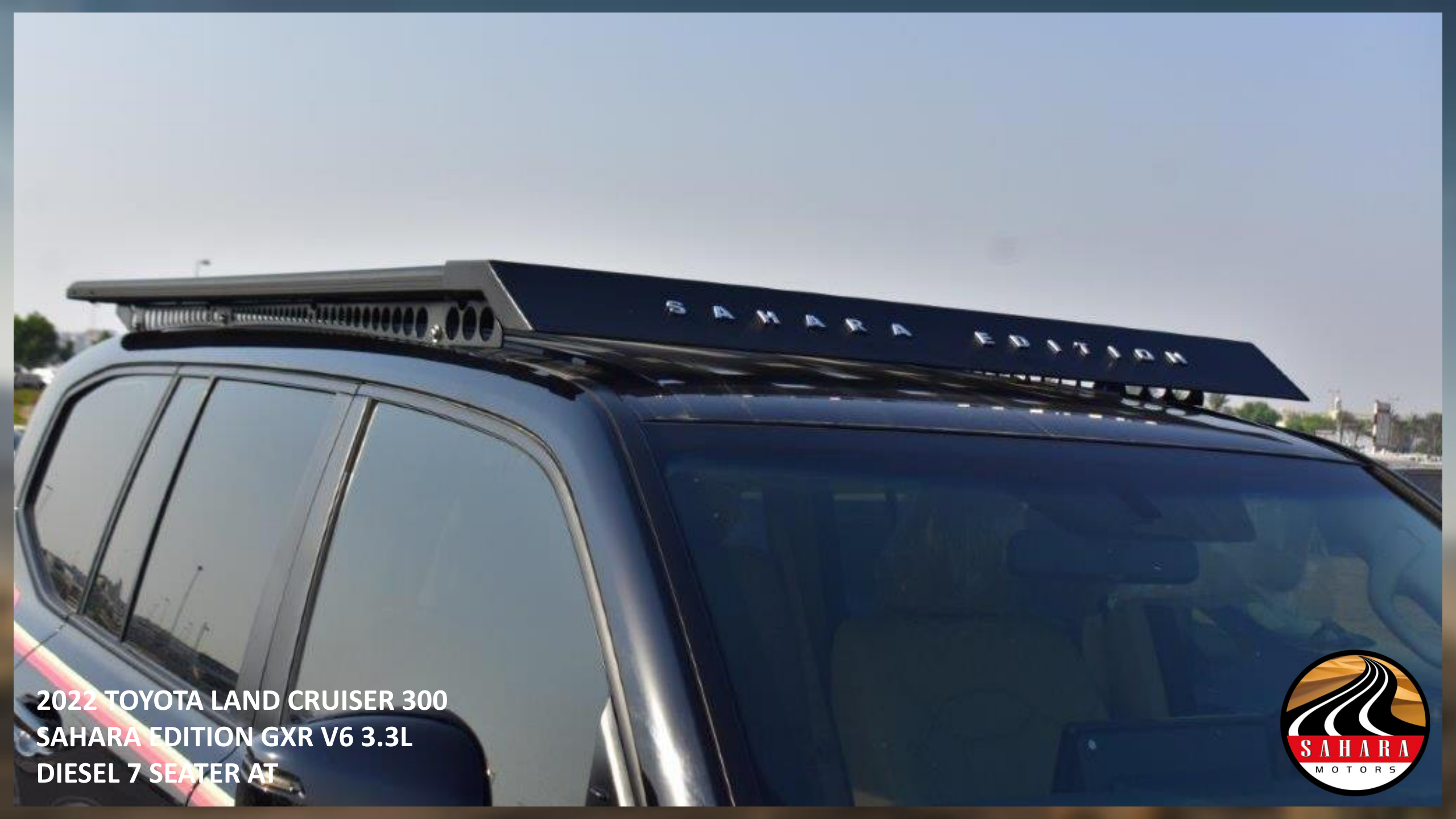
**2022 TOYOTA LAND CRUISER 300  
SAHARA EDITION GXR V6 3.3L  
DIESEL 7 SEATER AT**





**2022 TOYOTA LAND CRUISER 300  
SAHARA EDITION GXR V6 3.3L  
DIESEL 7 SEATER AT**





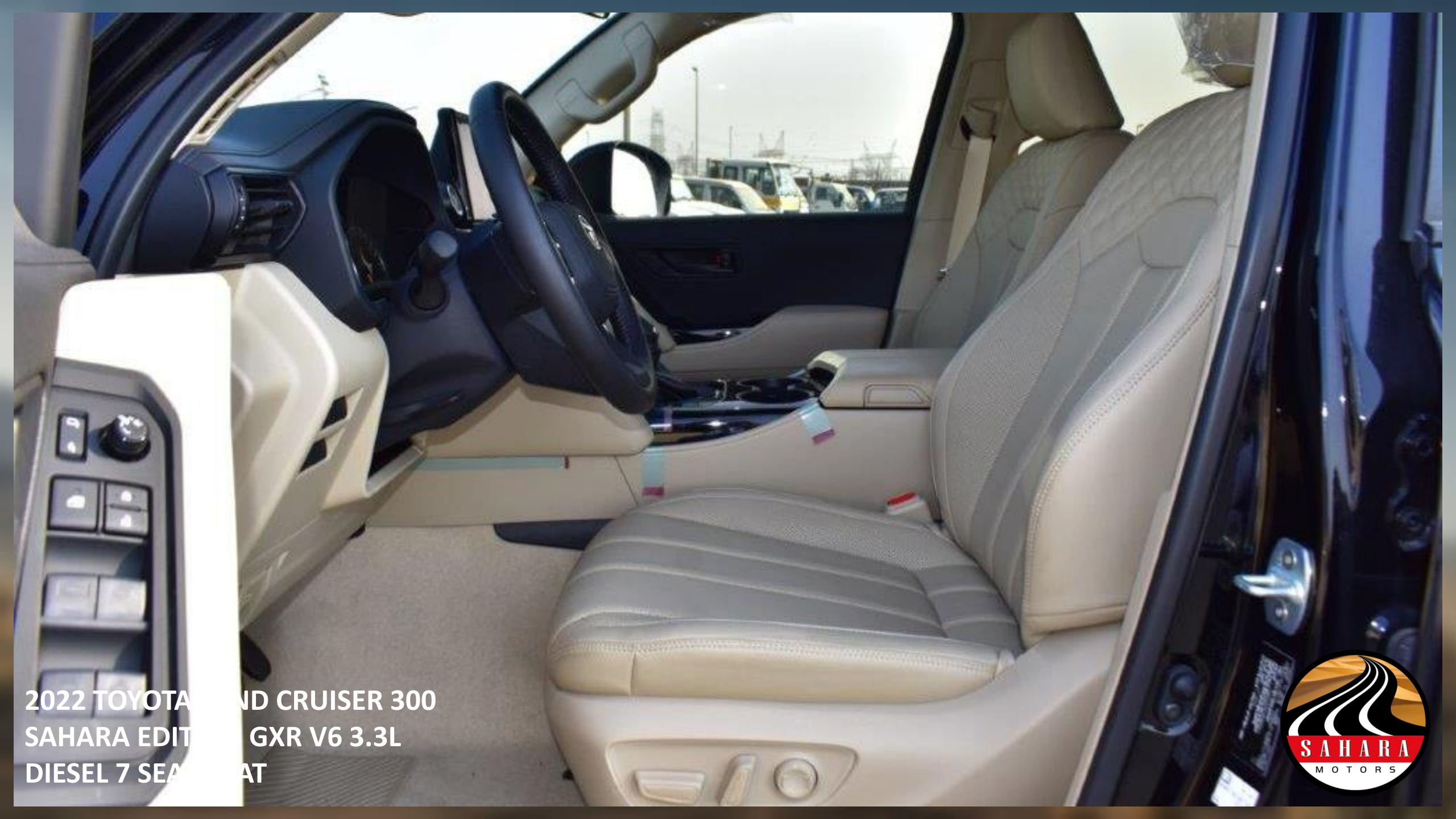
**2022 TOYOTA LAND CRUISER 300  
SAHARA EDITION GXR V6 3.3L  
DIESEL 7 SEATER AT**



**2022 TOYOTA LAND CRUISER 300  
SAHARA EDITION GXR V6 3.3L  
DIESEL 7 SEATER AT**

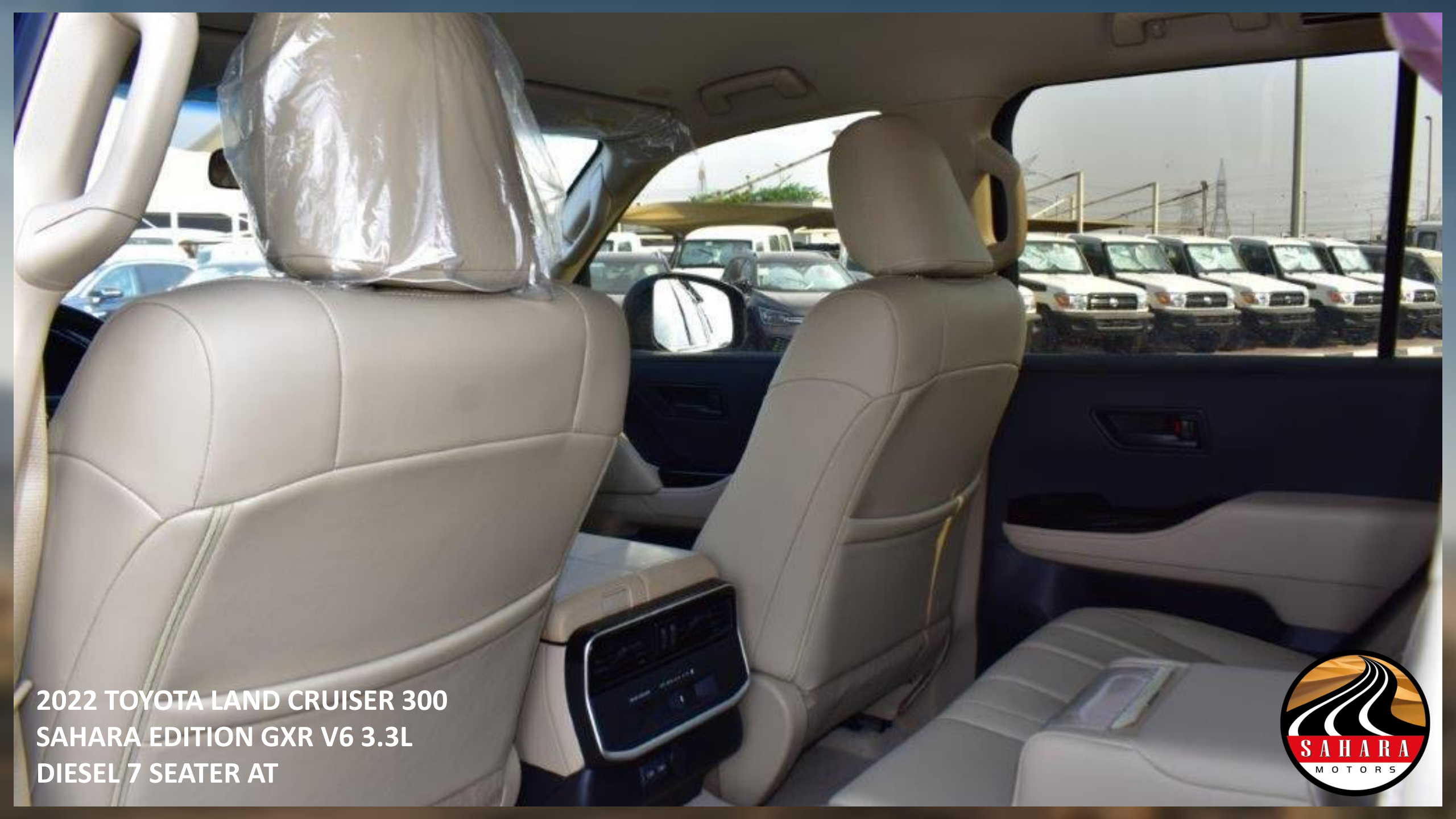






2022 TOYOTA LAND CRUISER 300  
SAHARA EDITION GXR V6 3.3L  
DIESEL 7 SEATER AT





**2022 TOYOTA LAND CRUISER 300  
SAHARA EDITION GXR V6 3.3L  
DIESEL 7 SEATER AT**





2022 TOYOTA LAND CRUISER 300  
SAHARA EDITION GXR V6 3.3L  
DIESEL 7 SEATER AT



2022 TOYOTA LAND CRUISER 300  
SAHARA EDITION GXR V6 3.3L  
DIESEL 7 SEATER AT



Please peel off the screen protector before using the multimedia system!

يرجى انزع حامي الشاشة قبل استخدام نظام الوسائط المتعددة!

2022 TOYOTA LAND CRUISER 300  
SAHARA EDITION GXR V6 3.3L  
DIESEL 7 SEATER AT



2022 TOYOTA LAND CRUISER 300  
SAHARA EDITION GXR V6 3.3L  
DIESEL 7 SEATER AT





**2022 TOYOTA LAND CRUISER 300  
SAHARA EDITION GXR V6 3.3L  
DIESEL 7 SEATER AT**



## **TECHNICAL FEATURES**

**MODEL CODE – FJ300L - GNUGYV**

**ENGINE F33A- FTV, 3.3 DIESEL, V6, DOHC, EFI, DUAL VVTI ENGINE, EURO 4 (W/O OBD)**

**OUTPUT- 302 HP (232-4.5), 71 KG-M (63-4.5) (SAE NET)**

**SUSPENSION: IND. DOUBLE WISHBONE/ 4-LINK**

**10-SPEED MULTIMODE AUTO TRANSMISSION: ECT-2ND**

**FULL-TIME 4WD WITH TORQUE SENSING CENTER LSD**

**DUAL FUEL TANK -110 LTRS**

**BRAKES FRONT & REAR: DISC**

**ABS + BA + VSC + ATRC + TSC+HAC**

**ACCESSORY CONNECTOR : FR.1(DC12) + RR:1 (DC12)+ DK: DC12**

**AIR CONDITIONER: AUTO (FR LH & RH INDEPENDENT CONTROL)**

**2ND ROW SEATS: 6:4 SPLIT TUMBLE TYPE**

**3RD ROW SEATS: 5:5 FOR 2 PERSONS RCLINING+MANUAL FOLD**

**AIRBAGS: DRIVER (SINGLE) + PASSENGER (DUAL)+KNEE AIRBAG**

**ANTI-THEFT ENGINE IMMOBILISER SYSTEM**

**BLACK OUTER MIRRORS WITH TURN SIGNAL +RETRACTABLE (MANUAL)**

**BODY RUST PROTECTION + PAINT PROTECTION FILM**

**BUMPERS: COLOUR KEYED**

**COLOURED DOOR OUTSIDE HANDLES**

**COOL BOX**

**CUPHOLDER: FR(2)+RR2 (4)**

**DAYTIME RUNNING LIGHT + CLEARANCE LAMP:LED**

**ECONOMY METER: WITH (LAMP + ZONE)**

**EMERGENCY STOP SIGNAL**

**FENDER LINER: FRONT (W/O INSULATOR)+REAR**

**FR SEAT BELTS: 3PELRX2 + PT + FL(1)**

**FR.HEADRESTS: FIXED**

**FRONT INTERMITTENT WIPERS**

**GLASS INTEGRATED ANTENNA**

**GLOVE BOX WITH LAMP**

**HEADLAMP LEVELLING FUNCTION: MANUAL**

**HEADLAMPS: LOW/HIGH: 3 REF, TURN LED**

**HEATER : FRONT (LH & RH INDEPENDENT CONTROL)**

**HIGH MOUNT STOP LAMP**

**HOOD SILENSER (HIGH + HEAT) +DASH SILENCER: LOW**

**ILLUMINATED ENTRY SYSTEM: IG SWITCH + ROOM LAMP**

**INNER REAR VIEW MIRROR: DAY/NIGHT**

**INSTRUMENT PANEL (FOR LOW GRADE)**

**INSTRUMENT PANEL CENTRE CLUSTE + FRONT CONSOLER: PAINTING (LOW)**

**INTEGRATED SPORT DRIVING:3 MODE**

**LIGHT CONTROL SYSTEM**

**LUGGAGE ROOM LAMP(BULB)**

**METER ILLUMINATION: OPTITRON**

**MUDGUARDS: STANDARD**

**MULTI INFORMATION DISPLAY (ON METER)**

**OCCUPANT CLASSIFICATION SENSOR: PASSENGER SEAT**

**PARKING BRAKE: ELECTRONIC**

**POWER DOOR LOCK / OUTER MIRRORS**

**POWER STEERING :HPS**

**POWER WINDOW : ONE TOUCH UP/DOWN (ALL WINDOWS)+JAM**

**PROTECTION**

**RADIATOR GRILLE : BLACK+CHROME**

**REAR COMBINATION LAMP:STOP+TAIL(LED)+ BULB TURN**

**REAR CONSOLE BOX:PVC**

**REAR HEADRESTS: 3 (2ND ROW) + 2 (3RD ROW)**

**REAR INTERMITTENT WIPER**

**REAR LUGGAGE DOOR:HATCH TYPE**

**REAR SPOILER**

**REAR WINDOW DFFOGGFR**





ROOM LAMP: RR1+RR2( BULB)  
RR SEAT BELTS: 3PELRX6  
SEVERE USAGE PACKAGE: HEAVY DUTY+HARD PROTECTOR  
SHIFT LEVER KNOB: PVC SEQUENTIAL (M-MODE)  
SIDE STEP-ALUMINIUM  
SMART ENTRY + PUSH START (D+P+BC) (LOW STYLING)  
SPARE WHEEL CARRIER: FLOOR MOUNTED  
SPECIAL NOISE INSULATOR  
SPECIAL NOISE INSULATOR  
SPEEDOMETER: OPTITRON  
STEERING COLUMN: TILT + TELESCOPIC  
STEERING WHEEL: LEATHER  
SUNVISOR: D + P  
TIRE INFLATION PRESSURE WARNING  
TOWING HOOK: FRONT+REAR  
WHEEL ARCH MOULDING: STANDARD (COLOUR)  
WINDSHIELD GLASS: GREEN W/TOP BAND+HEAT SHIELD  
AUDIO: AM/FM,CD, 6 SPK  
CRUISE CONTROL  
E/G UNDER COVER AND PROTECTOR: HD+DUCT (S/W NORMAL BUMPER)  
EMBLEM:70TH ANNIVERSARY +TWIN TURBO FOR DIESEL  
EXHAUST EMISSION: EURO 4 (W/O OBD, W/EGR)  
FIRE EXTINGUISHER  
FLOOR MATS  
PINTLE HOOK  
CENTRE DIFFERENTIAL LOCK  
REAR FOG LAMPS  
STEERING SWITCHES: AUDIO + MID + BT + CRUISE CONTROL (PAINT)  
CLEARANCE LAMP W/WELCOME LIGHT

#### SAHARA EDITION FEATURES

HED LIGHTS, FOG LAMPS, REAR COMBINATION LAMPS – BLACK EDITION  
FRONT / REAR CHROME ACCENTS – BLACK COLORED  
DOOR HANDLES – BLACK COLORED  
WINDOW TINTING  
MULTI INFORMATION SCREEN + NAVIATION  
REAR CAMERA  
LEATHER SEATS – DIAMOND CUT  
STEEL FRONT BUMPER COMPLETE WITH 2-7” ROUND LED LIGHTS  
1-20” LED LIGHT BAR  
2-TOW POINTS AND SHACKLES  
FRONT SKID PLATE  
WARN VR-EVO WINCH WITH SYNTHETIC ROPE AND WIRELESS REMOTE  
CONTROL  
DOBINSONS SHOCKS AND COIL SPRINGS PROVIDING 2.5” OF LIFT AND  
SUITABLE FOR ADDITIONAL STEEL BUMPER AND WINCH WEIGHT  
BLACK COLORED ROOF RACK  
MATT FINISH HEAVY DUTY SIDE STEP  
285-70R/17 BF GOODRICH MUD TERRAIN TIRES  
SAHARA EDITION BRANDING  
RETRO STYLE BODY STRIPES  
DRL ON FRONT GRILLE BOTH SIDES





## CONTACT US

Address: Block 3, Showroom no.25, Al  
Awir, Ras Al khor Auto Market, Dubai, UAE

Land Line: +971 43332623

Email: [info@saharamotorsuae.com](mailto:info@saharamotorsuae.com)

**TOYOTA**

<sup>2022</sup>  
**Land Cruiser 300**

**SAHARA EDITION** GXR V6 3.3L DIESEL AT